

P2060A

HIGH-END CNC FIBER LASER TUBE CUTTING MACHINE

The leader of new generation laser tube

- ✔ Equipped with new multi-touch CNC controller
- ✔ 3500mm- 6200mm unrestricted mixed row automatic intelligent processing
- ✔ Seamlessly docked with the intelligent manufacturing factory
- ✔ MESS cloud data management system
- ✔ **It is the seventh generation flagship**
- ✔ **It is an ingenious product made after eight years of intensive development**

Machine Details



Technical Parameters

Pipe diameter range: round ϕ 20mm- ϕ 220mm;

square 20mm*20mm- 140mm*140mm

Feeding size: 800mm*800mm*6200mm/800mm*800mm*8000mm

Laser power: 1500W / 2000W / 3000W / 4000W / 6000W

Max rotate speed: 160r/min

Positioning accuracy: 0.02mm

Maximum positioning speed: 120m/min

Acceleration: 1.5g



COMPANY PROFILE

Wuhan Golden Laser Co., Ltd. was established in 2005 and listed on the Shenzhen Stock Market in 2011. It is a digital technology commercial application solution provider.

Golden Laser has made significant growth in the fields of metal sheet cutting, tube cutting, and laser welding. The sheet cutting series include fully enclosed exchange table series, sheet and tube Combo series, open table cutting series, and precision small-format cutting series. The tube series include automatic tube cutting series and semi-automatic tube cutting series.

Golden Laser has achieved a huge response worldwide, and its equipment is exported to more than 120 countries and regions on 5 continents. It has signed agency cooperation agreements with more than 50 countries including the United States, Germany, Britain, France, South Korea, India, Australia, South Africa, Taiwan, Hungary, Mexico, Colombia, Russia, and Spain.

Now, Golden Laser is becoming the vanguard of subverting traditional crafts with the strength of icebreaker. Golden Laser, always on the way!



WUHAN GOLDEN LASER CO., LTD

- 📍 Golden Laser Industrial Park, Tianxing Rd, Hengdian Street, Chuanlong Avenue, Huangpi District, Wuhan, Hubei, China 430300
- ☎ +86-27-61750109
- 🌐 www.goldenfiberlaser.com
- ✉ info@goldenfiberlaser.com

FIBER LASER TUBE CUTTING MACHINES

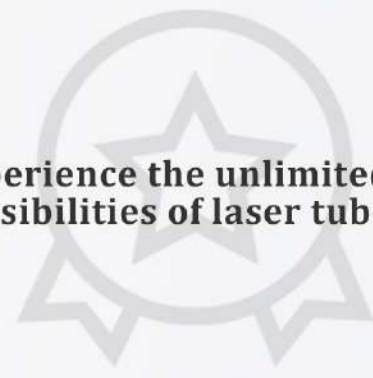
Metal Fabrication Laser Solution Provider
Laser Tube | Sheet Metal | Automation | Laser Robot



P2060A-3D

3D 5-AXIS FIBER LASER TUBE CUTTING MACHINE

Experience the unlimited possibilities of laser tube cutting



Technical Parameters

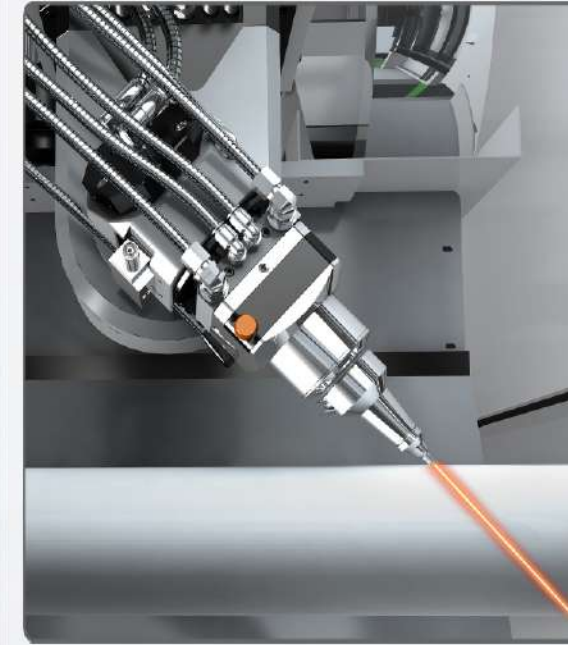
- ✓ Diameter: round $\Phi 20\text{mm}-\Phi 220\text{mm}$; square $20\text{mm} \times 20\text{mm}-140\text{mm} \times 140\text{mm}$
- ✓ Laser power: 1500W/2000W/3000W/4000W/6000W
- ✓ Bevel angle: max $\pm 45^\circ$
- ✓ Laser head: Golden Laser design/Germany LT ULTRA
- ✓ Max rotate speed: max 130r/min
- ✓ Acceleration: 1.5g

Reduce product costs with the advantages of laser processing

The laser's high-precision and high-speed cutting, combined with the oblique cutting of the swing head, provides unlimited possibilities for product processing.

Machine Details

Bevel cutting



Industry 4.0



Spanish nesting software



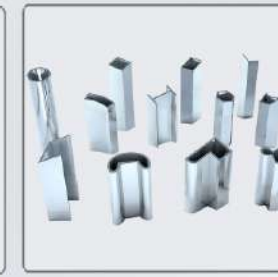
Intelligent CNC System



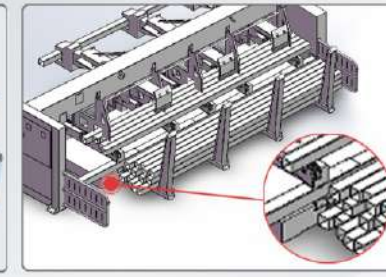
Conveyor collection



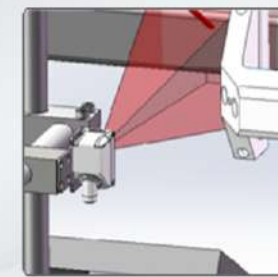
Profile cutting



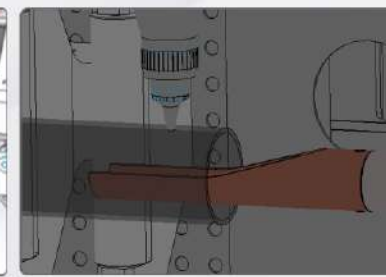
Automatic feeding and mixed discharge



Welding detect



Automatic deslagging



Samples



P1260A

SMALL TUBE FIBER LASER CUTTING MACHINE

Small size solves big problems

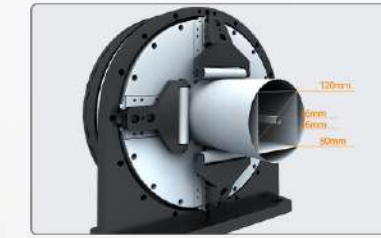
Perfectly solve the processing of tubes less than 100mm dia
 Original automatic feeding and distributing system
 Speed- always one step faster
 Accuracy- always better than others

Machine Details

Patented small tube loader



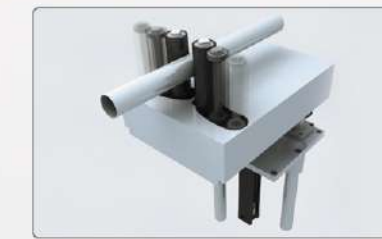
Full stroke chuck



Small footprint



Auxiliary centering device



Full servo dynamic support



Double row of jaws



Technical Parameters

- ✓ Pipe diameter range: round $\Phi 20\text{mm}-\Phi 120\text{mm}$; square $20\text{mm} \times 20\text{mm}-80\text{mm} \times 80\text{mm}$
- ✓ Feeding size: $800\text{mm} \times 800\text{mm} \times 6200\text{mm}$
- ✓ Laser power: 1500W/2000W/3000W/4000W
- ✓ Max position speed: X axis 150m/min, Y axis 120m/min
- ✓ Max rotate speed: 150r/min
- ✓ Positioning accuracy: 0.03mm
- ✓ Acceleration: 1.5g